



上汽通用五菱
SGMW

SAIC-GM-Wuling Group Customer Product Manual

SAIC-GM-WULING GROUP CUSTOMER PRODUCT BROCHURE

ELECTRON CARS LATINOAMERICA, S.A.

 WULING VEHÍCULOS ELÉCTRICOS PANAMÁ



www.sgmw.com.cn



CONTENTS

01

Company Introduction

Enterprise introduction

02

Core products and services

Core products and services

03

Product Series

Product series

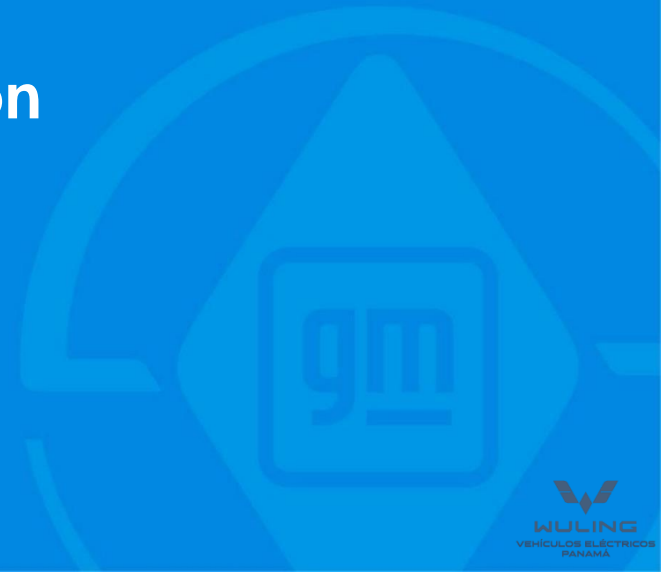
04

Client Cases

Customer case

Company Introduction

Enterprise introduction





SAIC-GM-Wuling Basic Information

- The predecessor of SAIC-GM-Wuling Automobile was Liuzhou Power Machinery Plant, established in 1958.
- In 2002, it was jointly established by SAIC Motor Corporation Limited, General Motors (China) Investment Co., Ltd., and... Guangxi Automobile Group, three parties jointly invested to establish

The typical model of "joint venture retaining the brand and joint venture retaining the independent brand" pioneered the "Sino-foreign" joint venture model.



Corporate Culture



Vision: To become a global benchmark company for innovation, cross-industry collaboration, and experiential learning.

Mission: To build a core competency that is "differentiated and cost-leading" and exceeds the expectations of users, employees, society, and shareholders.

Values: Cross-industry integration, 2C orientation, high-performing team, practical responsibility, integrity and compliance

Corporate Spirit: Hard work, self-reliance, innovation, and outstanding execution

Brand slogan: Wuling will build whatever the people need.



Development History

COURSE



Lichou Power Machinery Plant was established in October 1958.

1958Oct



In May 1985, Lichou Miniature Automobile Factory was established and launched the Wuling brand.

1985May



The 1 millionth car of the year rolled off the production line in December 2009.

2009Dec



Ten million vehicles rolled off the production line in November 2013.

2013Nov



December 2016
The company achieved a breakthrough in annual sales volume.
100 billion

2016Dec



November 2021
The first in the country to reach a cumulative production and sales volume of 25 million.
A single national brand car company

2021Nov



December 2024
The company's total sales exceeded 30 million vehicles

2024Dec



Lichou Tractor Factory was established in January 1966.

1966Jan



SAIC-GM-Wuling Automobile Co., Ltd. was established in November 2002.

2002Oct



In June 2005, SAIC-GM Wuling Qingdao Branch was officially established.

2010Jul



In December 2015, the company became the first domestic automaker to achieve annual production and sales exceeding 2 million vehicles.

2015Dec



SAIC-GM-Wuling Indonesia Automobile Co., Ltd. was completed and put into operation in July 2017.

2017Jul



The four-party agreement for the "125" project was signed in February 2023.

2023Feb

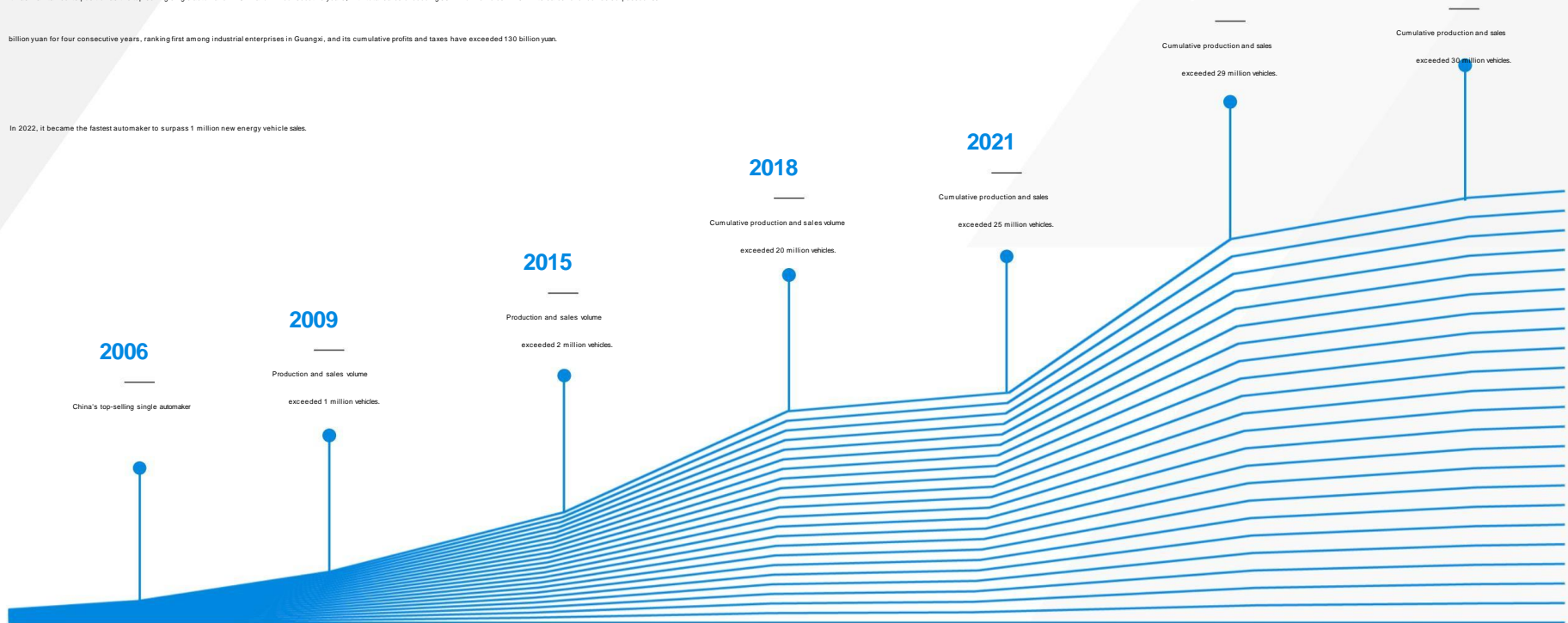


Market performance

It has maintained its position as the top-selling single automaker in China for 14 consecutive years, with total sales exceeding 30 million vehicles in 2024. Its sales revenue has surpassed 100 billion yuan for four consecutive years, ranking first among industrial enterprises in Guangxi, and its cumulative profits and taxes have exceeded 130 billion yuan.

In 2022, it became the fastest automaker to surpass 1 million new energy vehicle sales.

vehicles, with cumulative production and sales exceeding 30 million vehicles in 2024 and 2023.





Company product brand



上汽通用五菱
SGMW



WULING
人民的创富神车

The people's wealth-creating vehicle



Wuling Hongguang EV, Wuling Zhiguang EV, Wuling Zhiguang



Rongguang Mini Truck Extended Version Wuling Yangguang



Yangguang Optoelectronic Card



WULING
人民的品质出行

People's transportation



The third-generation Hongguang Mini, Hongguang Mini EV four-door version Bingo S



Starlight



Starlight S



Starlight 730



BAOJUN

People's intelligent driving



Etsuya



Yueye PLUS



Sea of Clouds



Baojun Enjoy



Huajing S





Honorary Award

National Advanced Collective in the Fight Against COVID-19, National Civilized Unit, National Advanced Grassroots Party Organization, National Harmonious Labor Relations Enterprise, National March 8th Red Banner Collective

Advanced grassroots Party organization of the autonomous region, Red Flag Party organization of SAIC Group, Excellent Party building brand of Shanghai State-owned Assets Supervision and Administration Commission, Advanced Party organization of Liuzhou City, Advanced grassroots Party organization of Liuzhou State-owned Assets Supervision and Administration Commission

In 2022, the company's Party building brand, "950 Spirit," was awarded the "Shanghai State-Owned Enterprise Party Building Culture Brand."



Core products and services
Core products and services



Research and development testing capabilities Honorary
award

With an investment of 4 billion yuan and covering an area of 2,000 mu, it has built 14 internationally and domestically advanced vehicle and component testing laboratories, including Asia's largest crash test laboratory.





Production base layout

The six major production bases form a production pattern that spans oceans, links the north and south, and coordinates the east and west.



SAIC India (Management) Company



Liuzhou Hexi Headquarters



Liuzhou Baojun Base



Qingdao Branch



Chongqing Branch



Indonesian company



Core product

New Energy Vehicles (NEVs)	MPV	SUV	Truck	Van	Baojun EV
 Third generation Hongguang MINI THS	 Starlight 730	 Stephen Chow	 Light Photo Card	 Yang Guang	 Etsuya
 Hongguang MINI EV Four-Door Version	 Hongguang S	 Stars	 Glory Card	 Light	 Yueye PLUS
 2025 Bingo	 New Hongguang S	 Hiromitsu S3	 Yangguang Optoelectronic Card	 Glory S	 Sea of Clouds
 Bingo S	 Jiachen			 Zhiguang New Energy	 Enjoying the Realm
 Starlight S	 Hongguang New Energy			 Journey	 Huajing S
 Starlight				 Hongguang Plus	



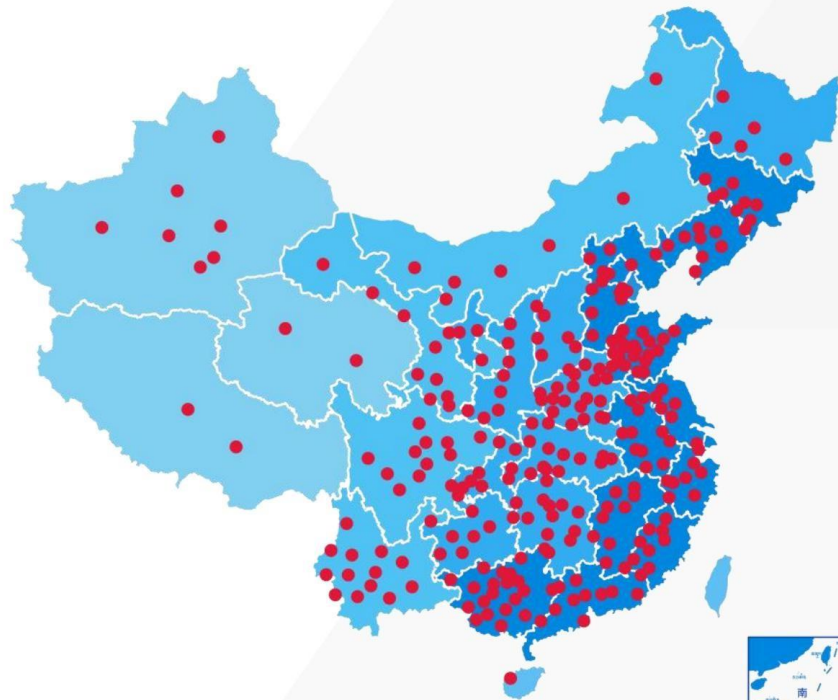
Industry-leading after-sales service network service network

With over 2,600 service outlets nationwide, we provide nationwide warranty service.

Online service from a team of thousands of experts

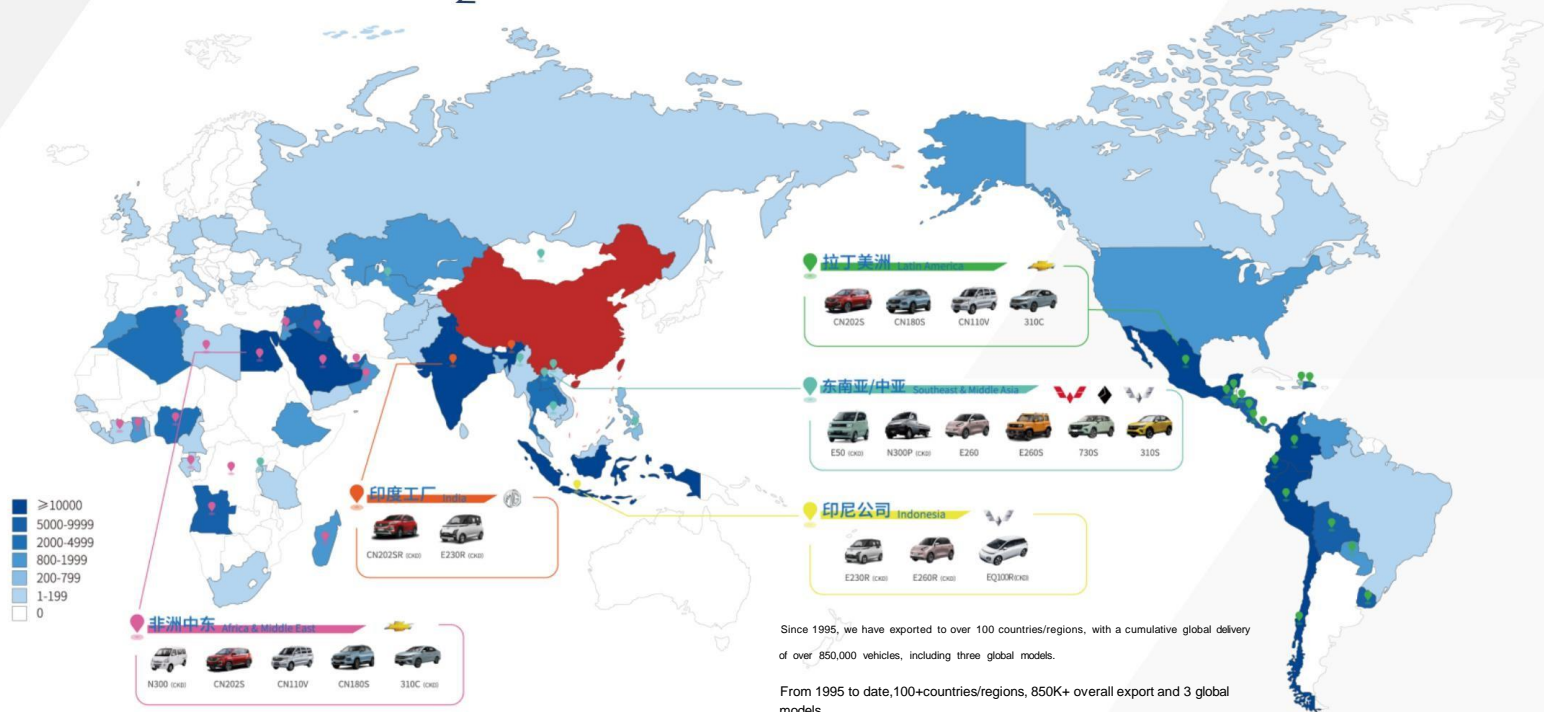
7*24
Hour

- Online customer service, instant response, 24-hour resolution
- Answering questions about car use and maintenance
- Roadside assistance





Complete vehicle export | Leveraging existing resources | Completely independent (Five billion independent) Industrial clusters



Since 1995, we have exported to over 100 countries/regions, with a cumulative global delivery of over 850,000 vehicles, including three global models.

From 1995 to date, 100+ countries/regions, 850K+ overall export and 3 global models

Overseas business is mainly carried out in a diversified model of "complete vehicle export", "borrowing resources to go global" and "complete self-reliance".

Multiple export models: CBU export, export by leveraging resources and investing in overseas manufacturing facilities. Currently, overseas markets cover more

than 40 countries and regions in Central and South America, the Middle East, Africa, and Southeast Asia.

Market covers ver 40 countries and regions in mid and south America, Mid East, Africa and Southeast Asia.



New energy commercial vehicles
NEW ENERGY COMMERCIAL VEHICLES





Wuling Yangguang window-sealed version

pure electric

Dimensions: 4985*1800*1975

Wheelbase: 3050

Use cases:

Large item logistics door-to-door delivery

Usage scenario:
door-to-door delivery of large logistics

Battery life	300km Comfort	300km practical type	310km CATL Customized version
Suggested Retail Price (RMB) (MSRP)	84,800	80,800	83,800
Container size: 6.5m ³		6.5m ³	6.5m ³
Maximum speed (km/h) (maximum speed)	90	90	90
Motor power	75kw	75kw	75kw
Battery capacity (kWh)	41.9	41.9	43.5
Number of seats	Block 2	Block 2	Block 2

DC fast charging: 30%-80% SOC in just 30 minutes

The only liquid-cooled battery in its class

Dc fast charge: SOC 30%-80% only takes 30min
The only liquid cooled battery in its class

After 4000+ charge-discharge cycles, the cell lifespan remains...

It can maintain more than 80%

4000 times + cell charge and discharge cycle, cell life can still maintain more than 80%



Wuling Yangguang Bus Edition

Use case: Passenger transport

Usage scenario: carry passenger

pure electric

Dimensions: 5010/4985*1800*1975

Wheelbase: 3050

Battery life	300KM Comfort Bus version	310KM Bus Version CATL Customized Edition	400KM Comfort Bus version	400KM Operating version
Suggested Retail Price (RMB) (MSRP)	82,800	85,800	89,800	125,800
Fast charging	support	support		
Maximum speed (km/h) (maximum speed)	100	100	100	100
Motor power	75kw	75kw	75kw	75kw
Battery capacity (kWh)	41.9	43.5	56.2	56.2
Number of seats	Six seats	Six seats	Six-seater/Nine-seater	

DC fast charging: 30%-80% SOC in just 30 minutes

The only liquid-cooled battery in its class

Dc fast charge: SOC 30%-80% only takes 30min
The only liquid cooled battery in its class

After 4000+ charge-discharge cycles, the cell lifespan remains...

It can maintain more than 80%

4000 times + cell charge and discharge cycle, cell life can still maintain more than 80%



Wuling Hongguang EV

pure electric

Dimensions: 4515 * 1725 * 1790

Wheelbase: 2850

Use case: Passenger transport

Usage scenario: carry passenger

Battery life	300KM practical type	300km standard model
Suggested Retail Price (RMB) (MSRP)	69,800	72,800
Fast charging	support	support
Maximum speed (km/h) (maximum speed)	135	135
Motor power	75kw	75kw
Battery capacity (kWh)	32.6	32.6
Number of seats	Five/six seats	Five/six seats

DC fast charging: 30%-80% SOC in just 30 minutes

The only liquid-cooled battery in its class (25 CF at room temperature)

Dc fast charge: SOC 30%-80% only takes 30min
The only liquid cooled battery in its class(room temperature 25CF)

After 4000+ charge-discharge cycles, the cell lifespan remains...

It can maintain more than 80%

4000 times + cell charge and discharge cycle, cell life can still maintain more than 80%



Wuling Hongguang Extended Range Version

Range-extended plug-in hybrid

Dimensions: 4515*1725*1790

Wheelbase: 2850

Use cases:

Large item logistics door-to-door delivery

Usage scenario:

door-to-door delivery of large logistics

Battery life	50km practical type	50km Comfort
Suggested Retail Price (RMB) (MSRP)	68,800	73,800
Fast charging	support	support
Maximum speed (km/h) (maximum speed)	135	135
Motor power	75kw	75kw
Battery capacity (kWh)	8.5	8.5
Number of seats	Five seats	Seven

After 8000+ charge-discharge cycles, the cell lifespan remains...

It can maintain more than 80%

8000 times + cell charge and discharge cycle, cell life can still maintain more than 80%



Wuling Sunshine EV

Use cases: setting up a stall, camping, picking up goods

Usage scenario:

Set up stalls, camp, pick up

pure electric

Dimensions: 3685*1530*1750

Wheelbase: 2600

Battery life	305km Progressive	201km Comfort
Suggested Retail Price (RMB) (MSRP)	57,800	50,800
Trunk volume: Maximum	527-1117m ³	527-1117m ³
speed (km/h) (maximum speed)	100	100
Motor power	30kw	30kw
Battery capacity (kWh)	30.6	17.7
Number of seats	Four seats	Four seats



Yangguang Optoelectronic Card

pure electric

Dimensions: 5320*1800*2025 (flat)

Wheelbase: 3350

Use case: Freight transportation

Usage scenario: Shipping goods

Battery life	260km flatbed truck	230km container truck
Suggested Retail Price (RMB) (MSRP)	84,800	91,800
Container size	3150*1680*360	3000*1680*1600
Maximum speed (km/h) (maximum speed)	100	90
Motor power	75kw	75kw
Battery capacity (kWh)	41.9	41.9
Number of seats	Block 2	Block 2

DC fast charging: 30%-80% SOC in just 30 minutes

The only liquid-cooled battery in its class

Dc fast charge: SOC 30%-80% only takes 30min
The only liquid cooled battery in its class

After 4000+ charge-discharge cycles, the cell lifespan remains...

It can maintain more than 80%

4000 times + cell charge and discharge cycle, cell life can still maintain more than 80%

fuel-powered commercial vehicles

FUEL COMMERCIAL VEHICLE





New Wuling Hongguang S

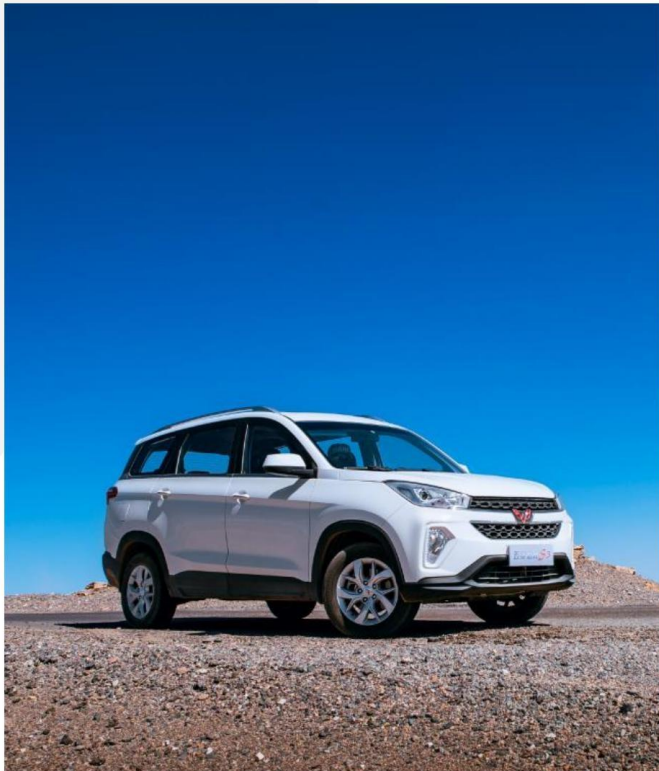
Multi-purpose passenger vehicle
Multi-function passenger car

fuel

Dimensions: 4420*1685*1755

Wheelbase: 2720

Vehicle type	1.5L manual Comfort
Suggested Retail Price (RMB) (MSRP)	60,900
Combined fuel consumption (L/100km)	6.5
Maximum speed (km/h) (maximum speed)	155
Maximum power	73kw
Fuel tank capacity (L)	50
Number of seats	Seats 2/5/7/8



Wuling Hongguang S3

Use cases: family cars and business purposes

Usage scenario: Family car and business use

fuel

Dimensions: 4655*1735*1790

Wheelbase: 2800

Vehicle type

1.5L manual
Comfort

**Suggested Retail Price (RMB)
(MSRP)**

68,800

Combined fuel consumption (L/100km)

6.9

**Maximum speed (km/h)
(maximum speed)**

150

Maximum power

73kw

Fuel tank capacity (L)

49

Number of seats

Seven



Wuling Hongguang PLUS

Use case: Passenger transport

Usage scenario: Carrying passengers

fuel

Dimensions: 4720*1840*1825

Wheelbase: 2800

Vehicle type	1.5L manual Standard type	1.5T manual Standard type
Suggested Retail Price (RMB) (MSRP)	67,800	74,800
Combined fuel consumption (L/100km)	7.3	7.3
Maximum speed (km/h) (maximum speed)	140	170
Maximum power	73kw	108kw
Fuel tank capacity (L)	53	53
Number of seats	Five/Seven/Eight Seats	Five/Seven/Eight Seats



Wuling Journey

Use cases: hauling goods, transporting passengers

Usage scenario: pulling goods and carrying passengers

fuel

Dimensions: 5150*1840*1910

5150*1840*1895

Wheelbase: 3180

Vehicle type	2.0L manual Entrepreneurial
Suggested Retail Price (RMB) (MSRP)	69,800
Combined fuel consumption (L/100km)	8.6
Maximum speed (km/h) (maximum speed)	160
Maximum power	100kw
Fuel tank capacity (L)	53
Number of seats	Seven



Wuling Sunshine

Use cases: hauling goods, transporting passengers

Usage scenario: pulling goods and carrying passengers

fuel

Dimensions: 3797*1510*1820

Wheelbase: 2500

Vehicle type	1.5L	1.5L
	practical	Practical window sealing vehicle
Suggested Retail Price (RMB) (MSRP)	37,900	37,900
NEDC combined fuel consumption (L/100km)	6.8	6
Maximum speed (km/h) (maximum speed)	115	115
Maximum power	75kw	75kw
Fuel tank capacity (L)	38	38
Number of seats	Five-seater/Seven-seater	Block 2

Core selling points

Capable of carrying both passengers and cargo, this reliable, affordable, and durable Wuling minivan is a classic choice for getting rich. Its suitable size allows it to navigate rural roads with ease.

Can carry passengers can pull goods, reliable quality assurance, cheap and durable Classic Wuling rich car, suitable size, country road.



Wuling Rongguang S

Use cases: hauling goods, transporting passengers

Usage scenario: pulling goods and carrying passengers

fuel

Dimensions: 4135*1625*1870

Wheelbase: 2700

Vehicle type	1.5L basic type	1.5L Basic window sealing vehicle
Suggested Retail Price (RMB) (MSRP)	43,900	43,900
NEDC combined fuel consumption (L/100km)	7.3	6.3
Maximum speed (km/h) (maximum speed)	120	120
Maximum power	75kw	75kw
Fuel tank capacity (L)	45	45
Number of seats	Five-seater/Seven-seater	Block 2

Key selling points

Capable of carrying both passengers and cargo, this spacious and reliable minivan offers excellent value for money.

Can carry passengers can pull goods, reliable quality to ensure wide Chuangfu micro passenger, large space, cost-effective



Wuling Hongguang V

Use cases: hauling goods, transporting passengers

Usage scenario: pulling goods and carrying passengers

fuel

Dimensions: 4425*1670*1860

Wheelbase: 2850

Vehicle type	1.5L Manual Takeout version	1.5L manual Enjoy Edition
Suggested Retail Price (RMB) (MSRP)	46,600	52800
gearbox	6-speed manual	6-speed manual
Maximum speed (km/h) (maximum speed)	150	150
Maximum power	75kw	75kw
Fuel tank capacity (L)	45	45
Number of seats	Five/Seven/Eight Seats	Seven/Eight Seats

Key selling points

Large cargo space, good vehicle stability, family-style front design, business-style interior design, optimized A-pillar for better visibility.

Large loading space, good vehicle stability Family front face design, business interior design A-pillar optimization, better vision



Wuling Rongguang Extended

Use cases: hauling goods, transporting passengers

Usage scenario: pulling goods and carrying passengers

fuel

Dimensions: 4490*1615*1900

Wheelbase: 3050

Vehicle type	1.5L basic type	1.5L Basic window sealing vehicle	1.5L Standard type (Assisted Version)	1.5L Standard window sealing vehicle (Assisted Version)	1.5L Standard type (No Conditioning Version)	1.5L Standard window sealing vehicle (No Conditioning Version)
Suggested Retail Price (RMB) (MSRP)	51,000	51,000	53,900	55,600	56,500	57,200
NEDC combined fuel consumption (L/100km)	7.65	7.65	7.65	7.65	7.65	7.65
Maximum speed (km/h) (maximum speed)	115	115	115	115	115	115
Maximum power	75kw	75kw	75kw	75kw	75kw	75kw
Fuel tank capacity (L)	45	45	45	45	45	45
Number of seats	Seven	Block 2	Seven	Block 2	Seven seats and two seats	

Key selling points

With an extended wheelbase, the interior space is larger, making it suitable for both passenger

and cargo transport. It is equipped with a powerful 1.5L engine.

Core selling points: Wheelbase lengthened, more space, passenger and cargo dual use with 1.5L engine power



Wuling Rongguang Mini Truck

Use case: Freight transportation

Usage scenario: Freight

fuel

Dimensions: (Extra Long Version) 5055*1630*1870/1875

(Extended version) 4785*1595*1870/1875

4535*1595*1870/1875

Wheelbase: 3050

Vehicle type	1.5L Single row/Double row Extra Long Version	1.5L Single row/Double row Extended version	1.5L Single row/Double row
Suggested Retail Price (RMB) (MSRP)	44,300/47,300	43,300/46,300	42,100/45,900
Container size	3210*1520*355 2500*1520*355	2920*1520*320 2250*1520*320	2710*1520*320 2080*1520*320
Maximum speed (km/h) (maximum speed)	115	115	115
Maximum power	75kw	75kw	75kw
Fuel tank capacity (L)	45	45	45
Number of seats	Two/Five Seats	Two/Five Seats	Two/Five Seats



Wuling Zhiguang small truck

Use case: Freight transportation

Usage scenario: Freight

fuel

Dimensions: (Single row) 4358*1503*1811

(Double row) 4606*1503*1849

Wheelbase: 2950

Vehicle type

1.5L single-cab

1.5L Dual Cab

**Suggested Retail Price (RMB)
(MSRP)**

36,900

39,900

Container size

2501*1424*360

2000*1424*360

**Maximum speed (km/h)
(maximum speed)**

115

115

Maximum power

75kw

75kw

Fuel tank capacity (L)

38

38

Number of seats

Block 2

Five seats

Key selling points

A classic entry-level mini-truck, compact and agile, powerful, and fuel-efficient!

Entry-level classic card, small and flexible, powerful, low fuel consumption



Wuling Rongguang New Card

Use case: Freight transportation

Usage scenario: Freight

fuel

Dimensions: 5220*1760*1900

(Extra Long Version) 5905*1910*2010/1980

Wheelbase: 3350

Vehicle type	2.0L Single/Double Cab	2.0L Single/Double Cab Extra Long	1.5L Single/Double Cab basic type
Suggested Retail Price (RMB) (MSRP)	52,800/55,800	59,800/62,800	49,800/52,800
Container size	3300*1770*360 2600*1770*360	3690x1800x355 2990x1800x355	3150*1630*360 2450*1630*360
Maximum speed (km/h) (maximum speed)	110	110	110
Maximum power	100kw	100kw	75kw
Fuel tank capacity (L)	50	50	50
Number of seats	Two/Five Seats	Two/Five Seats	Two/Five Seats

New energy passenger vehicles

NEW ENERGY PASSENGER CARS



五菱汽车



BAOJUN



Wuling Xingguang 2025 model 610KM-1100KM

Combined driving range

Pure electric/plug-in hybrid

Dimensions: 4835*1860*1515

Wheelbase: 2800

Configuration name (specs name)	70 Standard Edition	150 Advanced Edition	150 Navigator Edition	510 Advanced Edition	610 Advanced Edition	610 flagship version
Suggested Retail Price (RMB) (MSRP)	79800	92800	99800	109800	115800	125800
WLTC combined fuel consumption (L/100km) : 1.84		1.02	1.02			
Fast charging time (h) (quick charging time)		0.5	0.5	0.33	0.33	0.33
CLTC pure electric range (km) (E-Range)	70	150	150	510	610	610
Maximum speed (km/h) (maximum speed)	185	185	185	160	160	160
In-vehicle intelligence system (IVIS)	Standard configuration	Standard configuration	Standard configuration	Standard configuration	Standard configuration	Standard configuration
Energy consumption per 100km (kW-h/100km) : 11.1		13.6	13.6	12.5	12.8	12.8
Power battery capacity (kW-h)	9.5	20.5	20.5	54.5	69.2	69.2
Number of seats	Five seats	Five seats	Five seats	Five seats	Five seats	Five seats



Wuling Xingguang S 2025

510KM-1100KM
Combined driving range

Pure electric/plug-in hybrid

Dimensions: 4745*1890*1680

Wheelbase: 2800

Configuration name (specs name)	510KM Navigator (Pure Electric)	510KM flagship model (Pure Electric)	60KM Advanced (Interlude)	130KM Navigator (Interlude)	130KM flagship model (Interlude)	130KM high power Flagship model (plug-in hybrid)
Suggested Retail Price (RMB) (MSRP)	119,800	129,800	99,800	109,800	119,800	129,800
wLTC combined fuel consumption (L/100km) (combined fuel consumption)	-	-	2.42	1.82	1.82	1.96
Fast charging time (h) (quick charging time)	0.33	0.33	-	0.5	0.5	0.5
CLTC pure electric range (km) (E-Range)	510	510	60	130	130	130
Maximum speed (km/h) (maximum speed)	175	175	170	170	170	180
In-vehicle intelligence system (IVIS)	-	Standard configuration	-	-	Standard configuration	Standard configuration
Electricity consumption per 100 kilometers (kWh/100km)	14	14	-	-	-	-
Power battery capacity (kWh)	60	60	9.5	20.5	20.5	20.5
Number of seats	Five seats	Five seats	Five seats	Five seats	Five seats	Five seats



Wuling Xingguang 730

Pure electric/plug-in hybrid

Dimensions: 4910*1850*1770

Wheelbase: 2910

450KM-1100KM

Combined driving range

Configuration name (specs name)	6MT Comfort fuel	CVT Elite fuel	125km Luxury plug-in hybrid	500km Luxury pure electric
Pre-sale price (RMB) (preorder price)	76,800	86,800	106,800	112,800
WLTC combined fuel consumption (L/100km)	7.49	6.99	3.71	-
Fast charging time (h) (quick charging time)	-	-	0.5	0.33
CLTC pure electric range (km) (E-Range)	-	-	125	500
Maximum speed (km/h) (maximum speed)	180	180	170	160
In-vehicle intelligence system (IVIS)	-	-	Ling OS	Ling OS
Energy consumption per 100km (kW-h/100km)	-	-	16.2	13.6
Power battery capacity (kW-h)	-	-	20.5	60
Number of seats	Seven	Seven	Seven	Seven

Wuling Bingo S 2025

325KM-430KM

Combined driving range

pure electric

Dimensions: 4265*1785*1600

Wheelbase: 2610



Configuration name (specs name)	Premium Edition	Flagship model	Premium Edition	Flagship model
Suggested Retail Price (RMB) (MSRP)	66,800	72,800	72,800	79,800
Motor power	75KW	75KW	75KW	75KW
Fast charging time (h) (quick charging time)	0.58	0.58	0.58	0.58
CLTC pure electric range (km) (E-Range)	325	325	430	430
Maximum speed (km/h) (maximum sSpeed)	150	150	150	150
In-vehicle Intelligent Systems (IVIS)	Android	Android	Android	Android
AC charging power (kW)		3.3	3.3	3.3
Power battery capacity (kWh)	31.9	31.9	41.9	41.9
Number of seats	Five seats	Five seats	Five seats	Five seats



Bingo SUV

330KM-510KM

pure electric

Dimensions: 4090*1720*1575

Wheelbase: 2610

Combined driving range

Configuration name (specs name)	330km five-seater version	401km five-seater version	510km five-seater version
Suggested Retail Price (RMB) (MSRP)	75,800	84,800	95,800
Motor power	75KW	75KW	75KW
Fast charging time (h) (quick charging time)	0.35	0.35	0.3
CLTC pure electric range (km) (E-Range)	330	410	510
Maximum speed (km/h) (maximum speed)	140	140	140
In-vehicle intelligence system (IVIS)	-	-	-
AC charging power (kW)	3.3	3.3	6.6
Power battery capacity (kWh)	31.9	37.9	50.6
Number of seats	Five seats	Five seats	Five seats



Wuling Bingo 2025

203KM-410KM

Combined driving range

pure electric

Dimensions: 3950*1708*1580

Wheelbase: 2560

Configuration name (specs name)	Lightweight version (relax)	Enjoyment Edition (Pleasure Plus)	Lingxi Interconnected Edition (interconnection Plus)	Lingxi Premium Edition (Privileges)	Lingxi Premium Edition (Privileges)
Suggested Retail Price (RMB) (MSRP)	56,800	70,800	74,800	80,800	84,800
Motor power	30KW 50KW		50KW	50KW	50KW
Fast charging time (h) (quick charging time)	0.35	0.35	0.35	0.58	0.58
CLTC pure electric range (km) (E-Range)	203	333	333	333	410
Maximum speed (km/h) (maximum sPeed)	100	130	130	130	130
In-vehicle intelligence system (IVIS)	-	-	-	-	-
AC charging power (kW)	3.3	3.3	3.3	3.3	3.3
Power battery capacity (kWh): 17.3		31.9	31.9	31.9	37.9
Number of seats	Four seats		Four seats	Four seats	Four seats



Hongguang Mini EV

205KM-215KM

pure electric

Dimensions: 3064*1493*1614/3256*1510*1578 mm; Wheelbase: 2010/2190

mm

Driving range

Configuration name (specs name)	Third generation	Third generation	Four-door version	Four-door version	Four-door version
	215km Youth Edition	215km Advanced Version	Advanced version	Premium Edition	Premium+ Edition
Suggested Retail Price (RMB) (MSRP)	40,800	46,800	44,800	49,800	50,800
Motor power	30KW	30KW	30KW	30KW	30KW
Fast charging time (h) (quick charging time)	0.58	0.58	0.58	0.58	0.58
CLTC pure electric range (km) (E-Range)	215	215	205	205	205
Maximum speed (km/h) (maximum speed)	100	100	100	100	100
slow charging time (h) (Slow charge time)	5	5	4.8	4.8	4.8
Power battery capacity (kW-h)	17.3	17.3	16.2	16.2	16.2
Number of seats	Four seats	Four seats	Four seats	Four seats	Four seats



Baojun Enjoy

600KM/1100KM

Combined driving range

Pure electric/plug-in hybrid

Dimensions: 5005*1900*1505

Wheelbase: 2900

Configuration name (specs name)	140km plug-in hybrid	140km plug-in hybrid	600km pure electric	600km pure electric
	Deluxe Edition	Ride-hailing version	Deluxe Edition	Ride-hailing version
Suggested Retail Price (RMB) (MS RP)	149,800	176,800	153,800	179,800
WLT C combined fuel consumption (L/100km) (combined fuel consumption)	4.8	-	-	-
Fast charging time (h) (quick charging time)	0.25	0.25	0.33	0.33
CL TC pure electric range (km) (E-Range)	140	140	600	600
Maximum speed (km/h) (maximum speed)	190	190	170	170
In-vehicle intelligent systems (IVIS)	Equipped	Equipped	Equipped	Equipped
Electricity consumption per 100 kilometers (kWh / 100km)	14.9	14.9	13.2	13.2
Power battery capacity (kWh)	20.5	20.5	69.2	69.2
Number of seats	Five seats	Five seats	Five seats	Five seats



Baojun Sea of Clouds

500KM-1100KM

Driving range

Pure electric/mixed plug-in

Dimensions: 4590*1880*1608

Wheelbase: 2750

Configuration name (specs name)	2026 model 140km/h plug-in hybrid version	2026 model 500km pure electric version	2026 model 600km pure electric version
Suggested Retail Price (RMB) (MSRP)	109,800	109,800	119,800
wLTC combined fuel consumption (L/100km) (combined fuel consumption)	1.8	-	-
Fast charging time (h) (quick charging time)	0.5	0.33	0.33
CLTC pure electric range (km) (E-Range)	140	500	600
Maximum speed (km/h) (maximum speed)	170	170	170
In-vehicle intelligence system (IVIS)	Osmo Intelligent Driving	Osmo Intelligent Driving	Osmo Intelligent Driving
Electricity consumption per 100 kilometers (kWh/100km)	15.7	13.3	13.5
Power battery capacity (kWh)	20.5	56.7	69.2
Number of seats	Five seats	Five seats	Five seats



Baojun Yueye/Yueye PULS

303KM/401KM

Driving range

pure electric

Dimensions: 3381*1685*1721/3996*1760*1726 Wheelbase:

2110/2560

Configuration name (specs name): Yueye		Yueye PLUS 301KM	Yueye PLUS 401KM	Yueye PLUS 501KM
Suggested Retail Price (RMB) (MSRP)	80,800	76,800	87,800	95,800
Motor power	50	75	75	75
Fast charging time (h) (quick charging time)	0.58	0.58	0.58	0.5
CLTC pure electric range (km) (E-Range)	303	301	401	501
Maximum speed (km/h) (maximum speed)	100	150	150	150
Power consumption per 100 kilometers (kW h/100 km)	11	12.2	12.2	12.8
Power battery capacity (kW-h)	28.1	31.9	41.9	54
Number of seats	Four seats	Four seats	Four seats	Four seats

gasoline passenger cars

FUEL PASSENGER CAR



五菱汽车

WULING

XINGCHEN

FULL-FLEDGED SUV



Wuling Star

Hybrid

Dimensions: 4594*1820*1740

Wheelbase: 2750

Configuration name (specs name)	1.5T Manual Starry Night Edition
Suggested Retail Price (RMB) (MSRP)	68,800
WLTC combined fuel consumption (L/100km) (combined fuel consumption)	7.0
Power parameters (engine reference)	1.5T
Transmission	6-speed manual transmission (MT)
Maximum speed (km/h) (maximum speed)	170
Maximum power	108kw
Fuel tank capacity (L)	52.0
Number of seats	Five seats

Wuling Xingchi 2026

fuel

Dimensions: 4350*1750*1610

Wheelbase: 2550



Configuration name (specs name)	1.5L Manual Freestyle	1.5L Automatic Enjoyable Model
Suggested Retail Price (RMB) (MSRP)	56,800	71,800
WLTC combined fuel consumption (L/100km) (combined fuel consumption)	6.4	6.9
Power parameters (engine reference)	1.5L	1.5L
Transmission	6-speed manual transmission	Simulated 8-speed CVT
Maximum speed (km/h) (maximum speed)	165	165
Engine power	73kw	73kw
Fuel tank capacity (L)	45	45
Number of seats	Five seats	Five seats





Wuling Jiachen

fuel

Dimensions: 4785*1820*1760

Wheelbase: 2760

Configuration name (specs name)	1.5T MT	2.0L DHT
	Comfortable and Energetic Type	flagship model
Suggested Retail Price (RMB) (MSRP)	81,800	115,800
WLTC combined fuel consumption (L/100km) (combined fuel consumption)	7.2	5.7
Power parameters (engine reference)	1.5L	2.0L
Transmission	6-speed manual transmission	Simulated 8-speed CVT
Maximum speed (km/h) (maximum speed)	170	140
Rated power (kW/rpm)	108kw	100kw
Fuel tank capacity (L)	52	52
Number of seats	Seven	Seven

Special vehicles

SPECIAL PURPOSE VEHICLES



五菱汽车

Wuling Refrigerated Passenger Truck

pure electric

Dimensions: 4985*1800*1975

Wheelbase: 3050

mm; Internal cargo dimensions: 2500*1550*1180

mm; Seating capacity: Two seats.



Wuling vending truck

Fuel

dimensions: 4815*1685*2590

5700*1925*2663

Wheelbase: 3050/3350

Cargo box internal dimensions: 2865*1575*1810

3300*1825*1800

Number of seats: Two.



Wuling refrigerated truck

pure electric

Dimensions: 5520*1860*2760

Wheelbase: 3350

mm; Internal cargo dimensions: 3070*1680*1760

mm; Number of seats: Two.



Wuling fuel-powered refrigerated truck

fuel

Dimensions: 5420*1760*2475 mm;

Wheelbase: 3350 mm

Internal dimensions of cargo box: 3075*1595*1520

3162*1680*1694

Number of seats: Two



Wuling pure electric wing-shaped vehicle

pure electric

Dimensions: 5309*1805*2442

Wheelbase: 3350

Cargo box internal dimensions: 3010*1715*1600 ;

Number of seats: Two.



Wuling fuel-powered wing-shaped vehicle

fuel

Dimensions: 5240*1780*2140

Wheelbase: 3350

Cargo box internal dimensions: 2460*1640*1280

Number of seats: Two.



Client Cases

CUSTOMER CASE



五菱汽车



BAOHUN



Guangxi Zhuang Autonomous Region

Public Security Department delivered over 1,200 vehicles in 2024.



Shandong Linyi

government procures over 300 official vehicles.



China Unicom

has purchased a total of 1,400 units.



Hunan Wuzizui Industrial Group purchases: 1600 units



Kingenta Group

In 2024, one of China's top 500 manufacturing enterprises officially entered into a strategic partnership with SAIC-GM-Wuling.



Guangxi Jin Sangzi Group's

procurement of service vehicles: 785 units



700 used cars exported





Exclusive one-stop car purchase service:

Employees apply for coupons y Wuling verifies employee qualifications y Exclusive coupons are issued y Negotiate the price at the store and then redeem (additional discounts available).

Regular on-site maintenance



Customized car owner activities



Exclusive Lecture Hall for Car Owners



SGMW



Luzhou Industrial Study Tour



Invite employees and their families to experience the charm of industrial civilization [Luzhou Industrial Museum]

National Industrial Tourism Demonstration Base



National AAAA-level tourist attraction





Customers' employees' children learn about the cultural heritage of Liuzhou river snail rice noodles at the "river snail rice noodle production base".



Customer employees' children's study tour to learn about automobiles



Friendly football match for the children of customers' employees



Wuling's core strengths course sharing



Cross-border exchanges

Wuling Marketing Case

Sharing of high-quality courses

Spark Program Courses

Star Project Course

Call Center Course (36 Cross-

Disciplinary Sharing Sessions)



Wuling's core technology

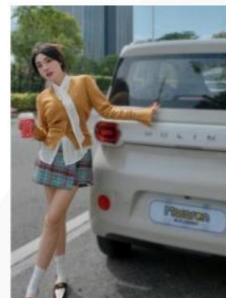
Sharing of high-quality courses

"Heavenly Spirit God" Wuling Technology Course

N73 Vehicle Development Concept Course

Lean Manufacturing (LIM) Course (28 cross-

disciplinary sharing sessions)



Long-term partners
cooperative unit



中国移动
China Mobile



中国电信
CHINA TELECOM



China
unicom 中国联通
创新·与智慧同行



国家电网
STATE GRID



中国南方电网
CHINA SOUTHERN POWER GRID

